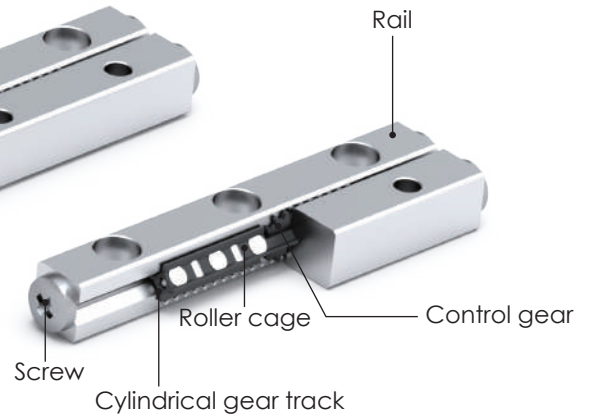
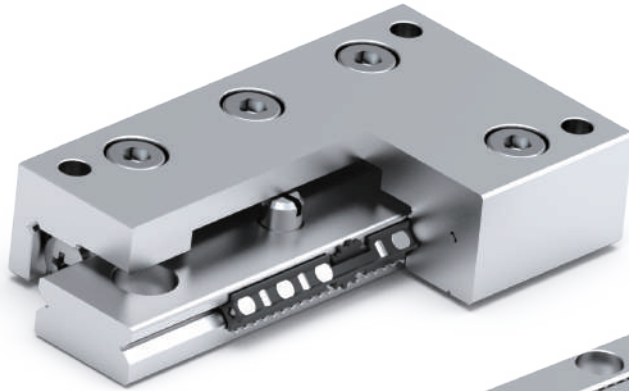




LINEAR MOTION TECHNOLOGY

CROSS ROLLER

Small is smart / Small is beauty / Miniature brings infinity



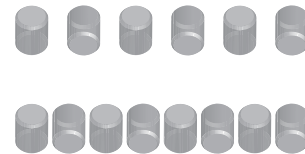
High precision, long service life

Low noise, low friction resistance, and vibration-free linear motion.

Fully enclosed cross roller cage design (Plastic design)

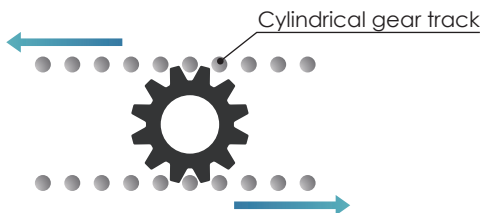
Dense arrangement of rollers, high load capacity

By reducing the spacing between the rollers, more rollers can be accommodated within the same roller cage length for the cross rollers, thereby increasing the load capacity of the limited stroke limited stroke.



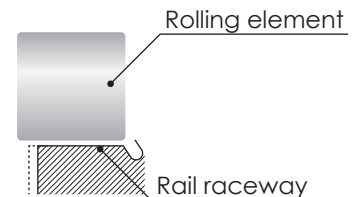
Patent for Anti-Creep design

The cpc patented anti-creep design prevents the rollers from shifting or sliding during operation by fitting a toothed wheel on the roller cage with a cylindrical tooth track.



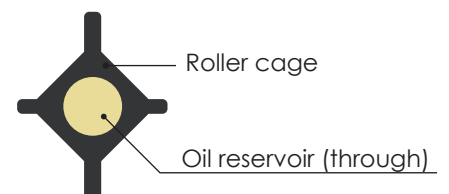
High proportion contact length

The contact surface between the rolling elements and the rail raceway is greater than that of competitors, which allows cpc to have a higher rated load capacity under the same size.



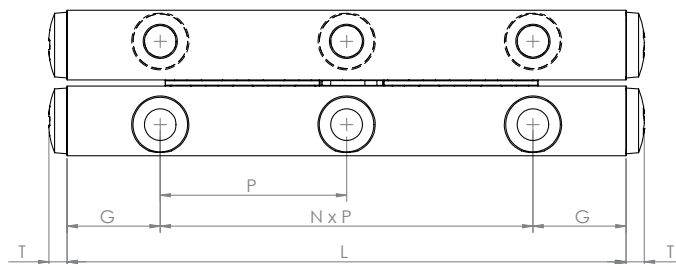
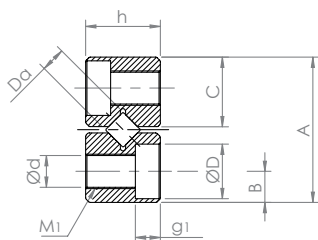
Integrated through-type oil reservoir design

The roller cage design not only effectively stabilizes the rollers but also allows for grease storage in the oil reservoirs between the rollers during operation. This ensures even lubrication of the rollers, demonstrating excellent lubrication capability and extending the relubrication interval.



Dimensions and Specifications

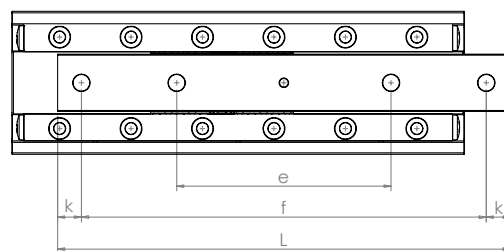
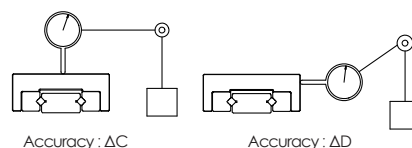
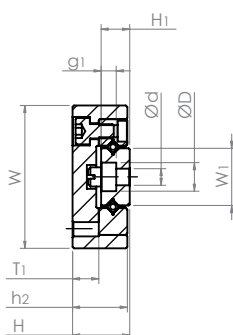
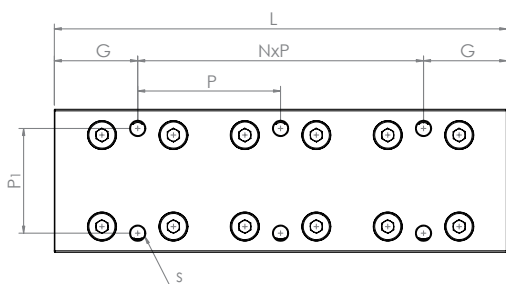
CR series



Model code	Max. stroke	Fabricate Dimensions(mm)			Assembly dimensions(mm)									Roller diameter	No. of rollers	Allowable preload	Basic load capacity (each roller)		Basic load capacity		Weight (1set)
		A	h	L	NxP	G	C	B	M1	d	D	g1	T				Da	Z	δ (μm)	Cs (kN)	
CR 2030	20	12	6	30	1x15	7.5	5.6	2.5	M3	2.55	4.4	2	1.8	2	6	-3	0.386	0.418	1.61	2.51	27
CR 2045	30			45	2x15														2.41	4.19	40
CR 2060	30			60	3x15														3.48	6.70	53
CR 2075	50			75	4x15														3.81	7.54	67
CR 2090	50			90	5x15														4.77	10.05	80
CR 2105	70			105	6x15														5.08	10.89	92
CR 2120	70			120	7x15														5.97	13.40	106
CR 2135	90			135	8x15														6.26	14.24	119
CR 2150	90			150	9x15														7.11	16.75	132
CR 2165	110			165	10x15														7.38	17.59	145
CR 2180	110			180	11x15														8.19	20.10	158

Dimensions and Specifications

CRT series



Model code	Max. stroke	Main dimensions(mm)			Table mounting tap position (mm)			Side surface dimensions(mm)				Base surface dimensions mounting hole position (mm)				Basic load capacity		Accuracy (μm)			
		W ± 0.1	H ± 0.1	L	P1	NxP	G	s	h2	T1	H1	W1	Dxdxg1	e	f	k	No. of rollers	C	Co	ΔC	ΔD
CRT 2035	20	30	12	35	22	1x28	3.5	M3	11.5	5.5	6	12	6x3.5x3.2	-	25	5	6	1.61	2.51	2	4
CRT 2050	30			50		1x43	3.5							-	35	7.5	10	2.41	4.19		
CRT 2065	40			65		1x30	17.5							33	55	5	16	3.48	6.70		
CRT 2080	50			80		1x45	17.5							40	70	5	18	3.81	7.54		
CRT 2095	60			95		2x30	17.5							45	85	5	24	4.77	10.05		
CRT 2110	70			110		1x45	32.5							50	95	7.5	26	5.08	10.89		
CRT 2125	80			125		2x45	17.5							55	110	7.5	32	5.97	13.40		

2024.09.17 Printed in Taiwan

cpc CHIEFTEK PRECISION CO., LTD.

HEADQUARTERS
CHIEFTEK PRECISION CO., LTD.
No.3, Dali 1st Rd., Xinshi Dist., Southern Taiwan
Science Park, Tainan City 741-45, Taiwan (R.O.C)
TEL:+886-6-505 5858 Http://www.chieftek.com
E-mail:service@mail.chieftek.com

CHIEFTEK PRECISION USA
2280 E. Locust Court.
Ontario, CA 91761, USA
Tel:+1-909-773-1200
Fax:+1-909-773-1202

cpc Europa GmbH
Industriepark 314,
D-78244 Gottmadingen, Germany
TEL:+49-7731-59130-38
FAX:+49-7731-59130-28

CHIEFTEK MACHINERY KUNSHAN CO., LTD.
1st Floor, Factory Building #3, No. 789,
Xintang Road, Yushan Town, Kunshan
City, Jiangsu P.R. China
TEL:+86-512-5525 2831
FAX:+86-512-5525 2851



* cpc reserves the right to revise any information (technical details) any time without notice, for printing mistakes or any other incidental mistakes. We take no responsibility.